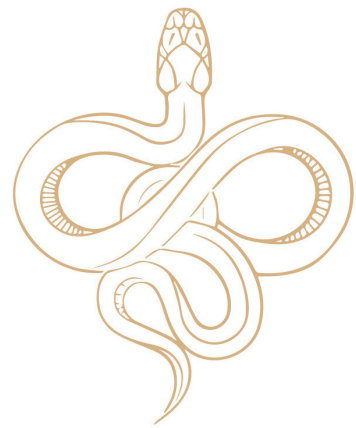


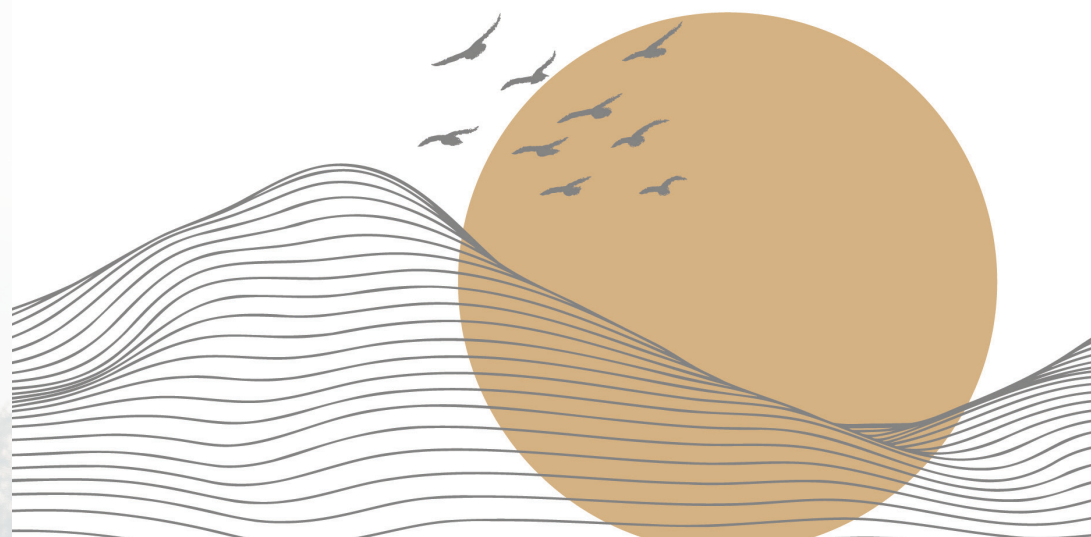


D U N E



DUNE

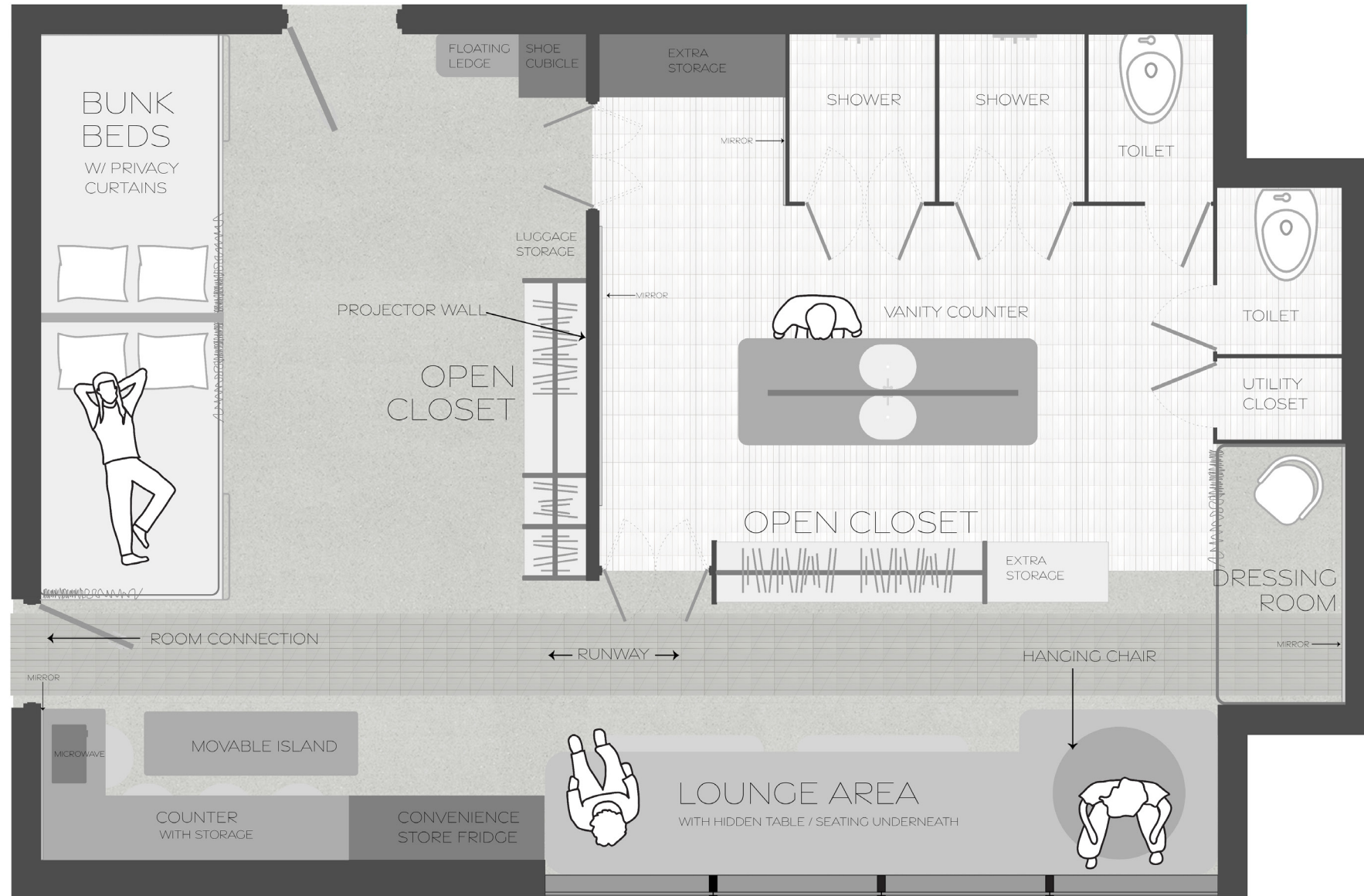
PALM DESERT, CA



Embodying the phantasmagoria and sense of community of the music & arts festivals of the Southern California deserts, **Dune** is outfitted with modern and comfortable amenities that's perfect for your next adventure.



## Floor Plan



### Beds

Four full beds (in 2 bunk beds) w/ privacy curtains

### Views

Desert or Courtyard

### Size

570 sq. ft.

### Unique Features

- 2 showers & 2 toilets
- 4-person back-to-back vanity
- Large merchandiser fridge w/ ice machine
- LCD projector & surround sound system
- Kitchenette with movable island
- Dressing room with runway
- Lounge area with smart glass window & view

## Other Amenities

### Bed & Bath

- High grade linen, pillows & goose down tropical weight duvets
- Iron & ironing board
- Thick terry bathrobes
- Hair dryer
- Turn-down service upon request

### Room

- Laptop-compatible in-room safe
- Complimentary Wi-Fi
- Complimentary Netflix, Hulu, Spotify & HBO Max
- Plentiful storage space and 12-pair shoe cabinet
- Connecting rooms available
- Ring light available upon request



**View when entering the room** (with the bathroom & lounge areas to the left)

[Left] The wall doubles as a projector screen. [Right] Each bed has a retractable task light, and can be closed off with privacy curtains. Luggage can be stored under. [Center] The kitchenette (movable island not shown) with a large fridge for outside food & drinks, a microwave, and disposable cutleries on the shelf.



**View of the lounge area** (from the kitchenette or connecting room)

[Left] The open closets from the bedroom & the bathroom. [Right] The lounge area with the hanging chair, sofa seating, and pull-out ottomans/coffee tables. [Center] The dressing room with full length mirror & runway (with runway lights above). When 2 rooms are connected, the runway is made even longer.



**View of the lounge** (from the dressing room)

[Left] Smart glass window with wall-mounted controls. [Right] Open closet with easy access to the runway/dressing area. The swing door leads to the bathroom.  
[Center] The kitchenette and the door to the connecting room.



DUNE

## Smart Glass Windows

At Dune, you not only have the ability to control the room temperature, LCD projector, sound, and lighting at the touch of your fingertips— even the windows are smart. The lounge area windows can be customized to the following modes:



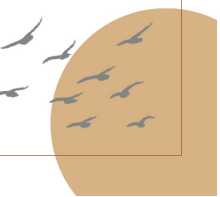
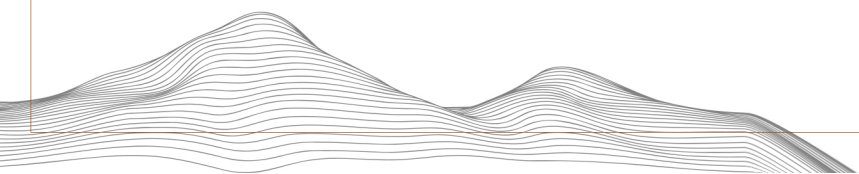
**Regular** (default)

**Screen**



**Blackout**

**Mirror**



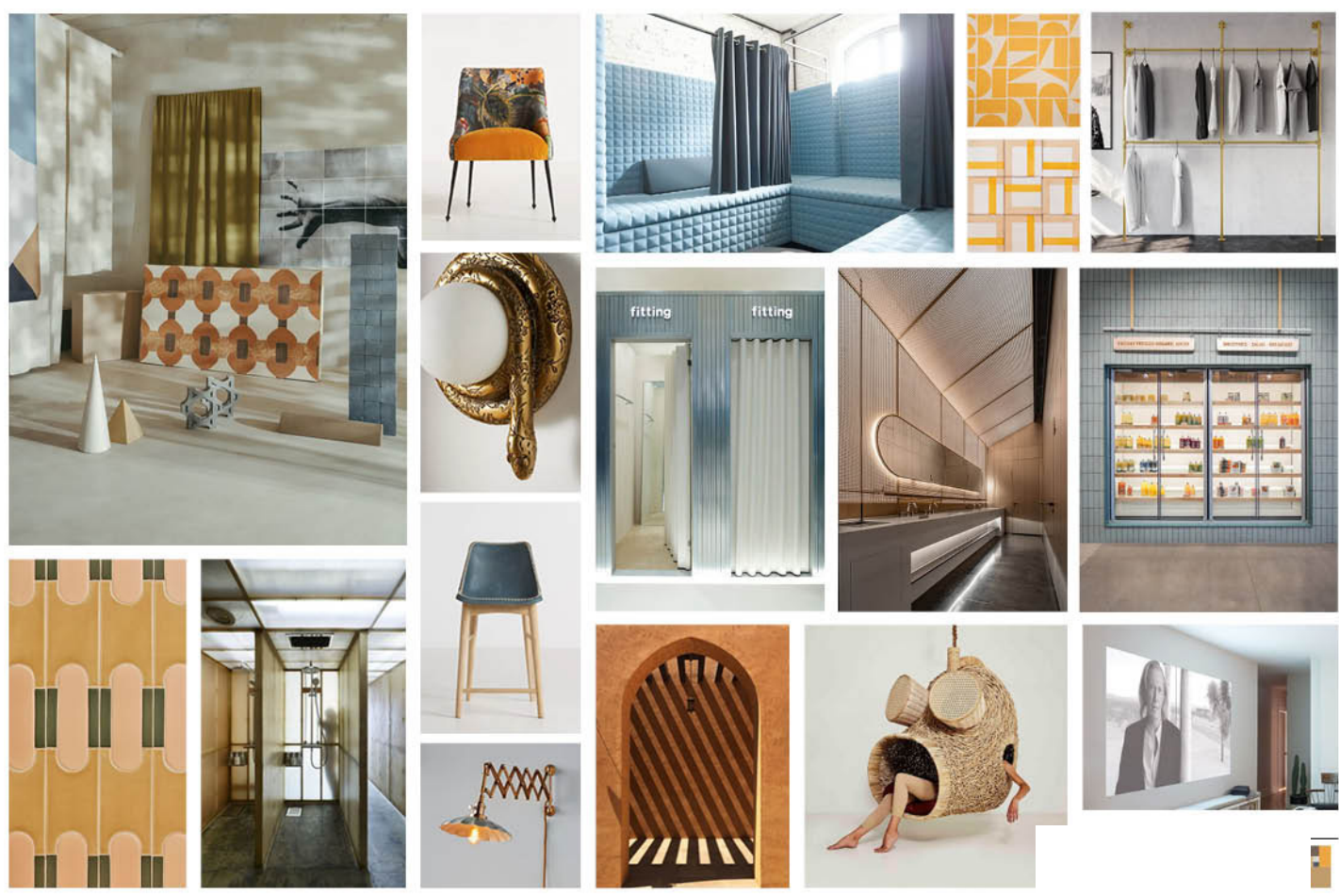


## The Concept

Known as the cultural and retail center of the desert communities, the city of Palm Desert is sandwiched between Palm Springs and Indo/Coachella Valley, which are venues for festivals such as: Palm Springs Pride, Palm Springs International Film Festival, Coachella Valley Music & Arts Festival, Stagecoach Country Music Festival, Fashion Week El Paseo, and numerous others.

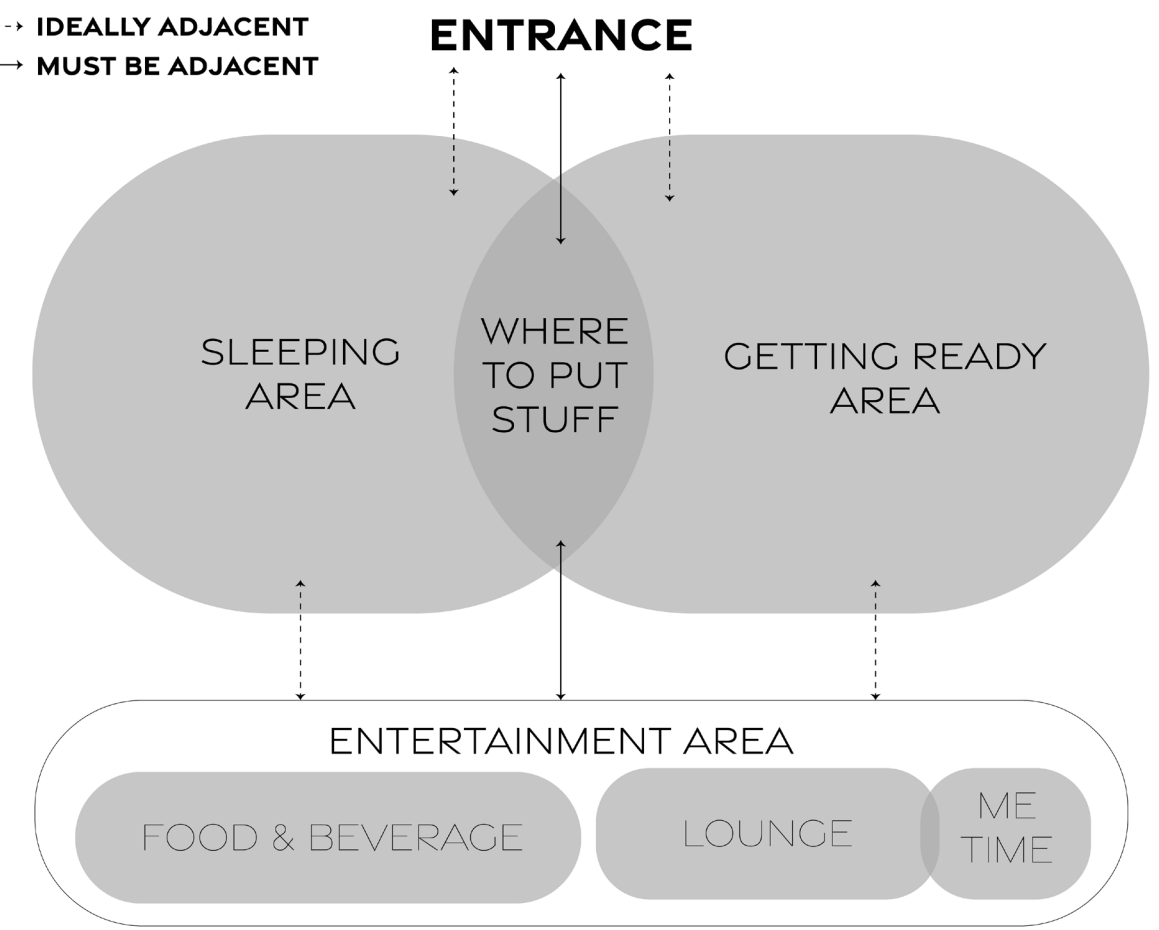
Most hotels featured in the government website are your run-of-the-mill standard rooms from hotel chains. The more unique ones are catered for sporting (golf, tennis) events or relaxing stays for an older (wealthier) demographic.

Dune was designed to accommodate young adults, particularly **groups**, who usually use hotels as changing/sleeping/pre-gaming hubs for their big event. Dune borrows elements from retail shops, locker & recreation rooms while maintaining the desert vibes.

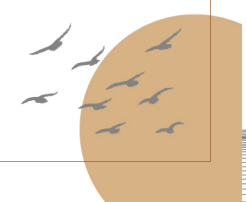
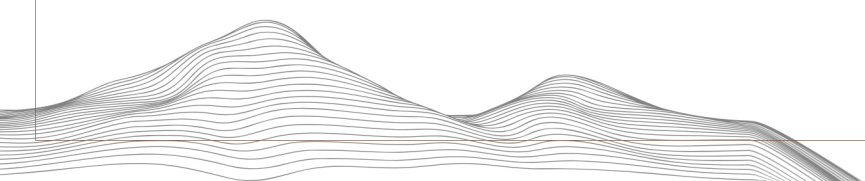


**Mood Board**

- - - - - IDEALLY ADJACENT  
 ———— MUST BE ADJACENT



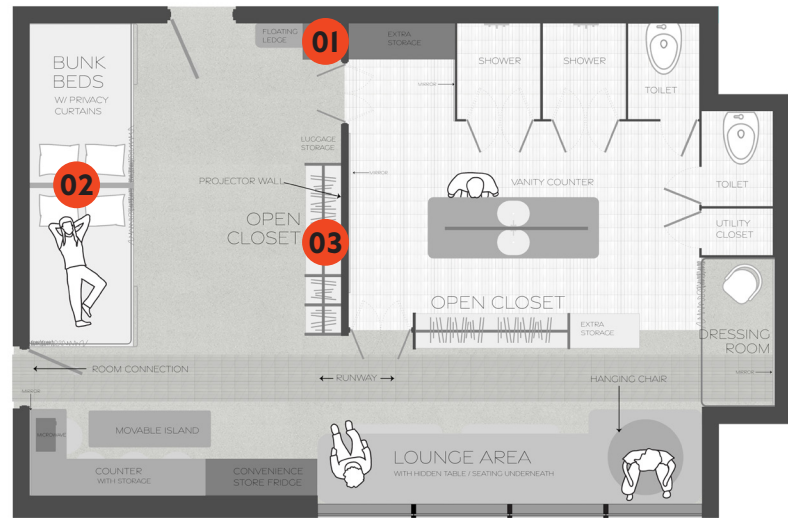
**Space Programming**



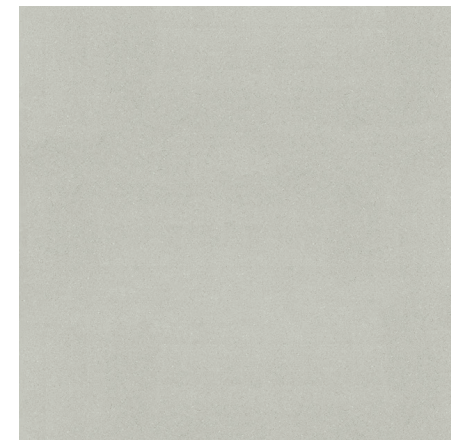




# FF&E Selections



WALL - STUCCO



FLOOR - CEMENT TILES



02



CUSTOM BUNK BEDS MERGING THESE 2 STYLES



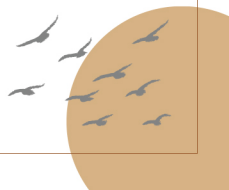
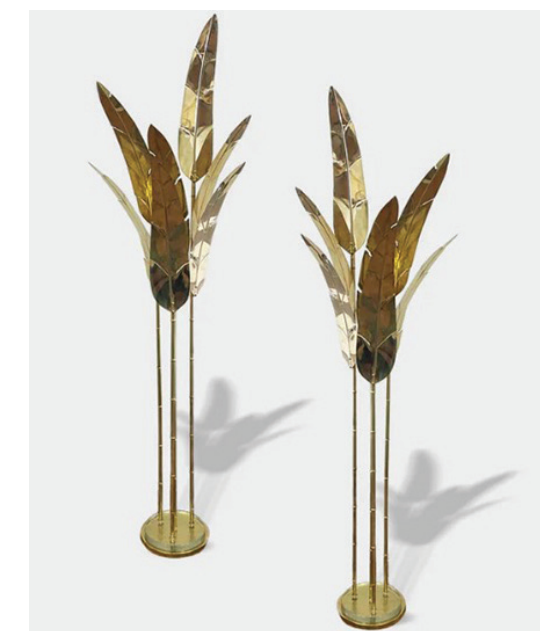
01

MIRROR SHOE CABINET



03

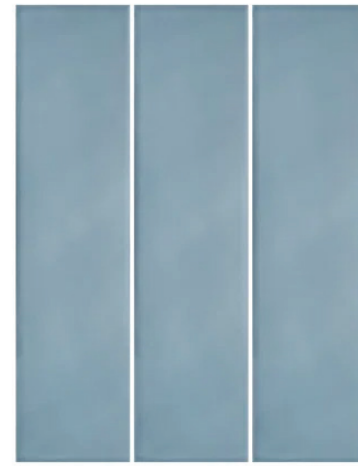
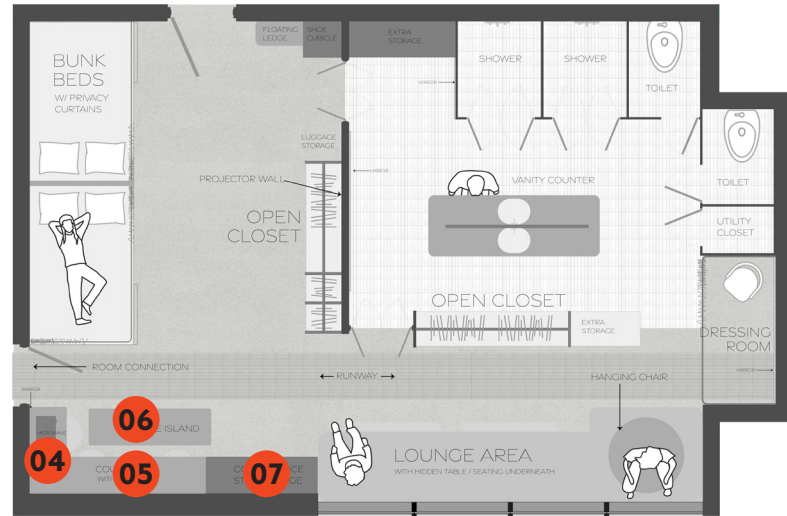
OPEN CLOSET W/ THESE CONFIGURATIONS (IN GOLD)



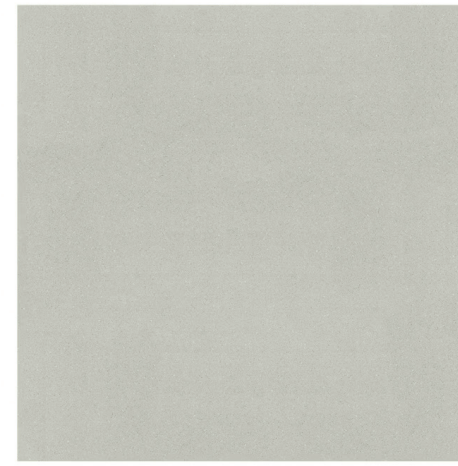


DUNE

# FF&E Selections



KITCHEN WALL - SUBWAY TILES



FLOOR - CEMENT TILES



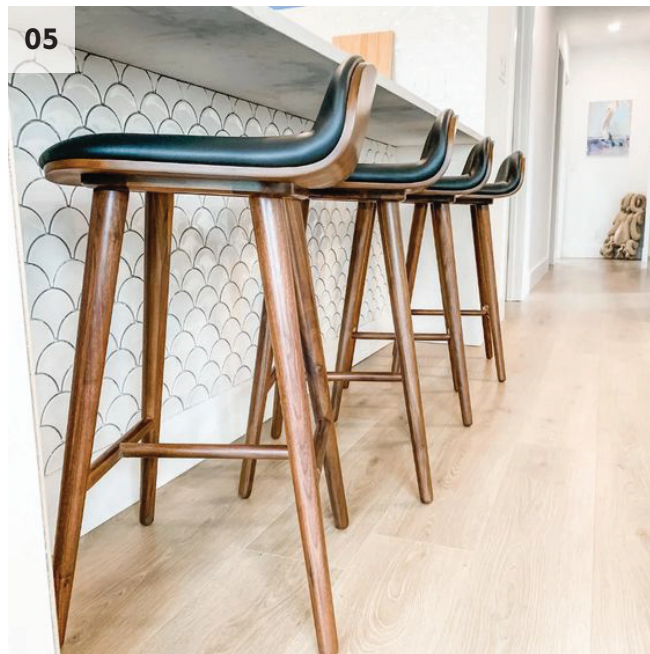
RUNWAY SUBWAY TILES

04



HANGING KITCHEN SHELVES

05



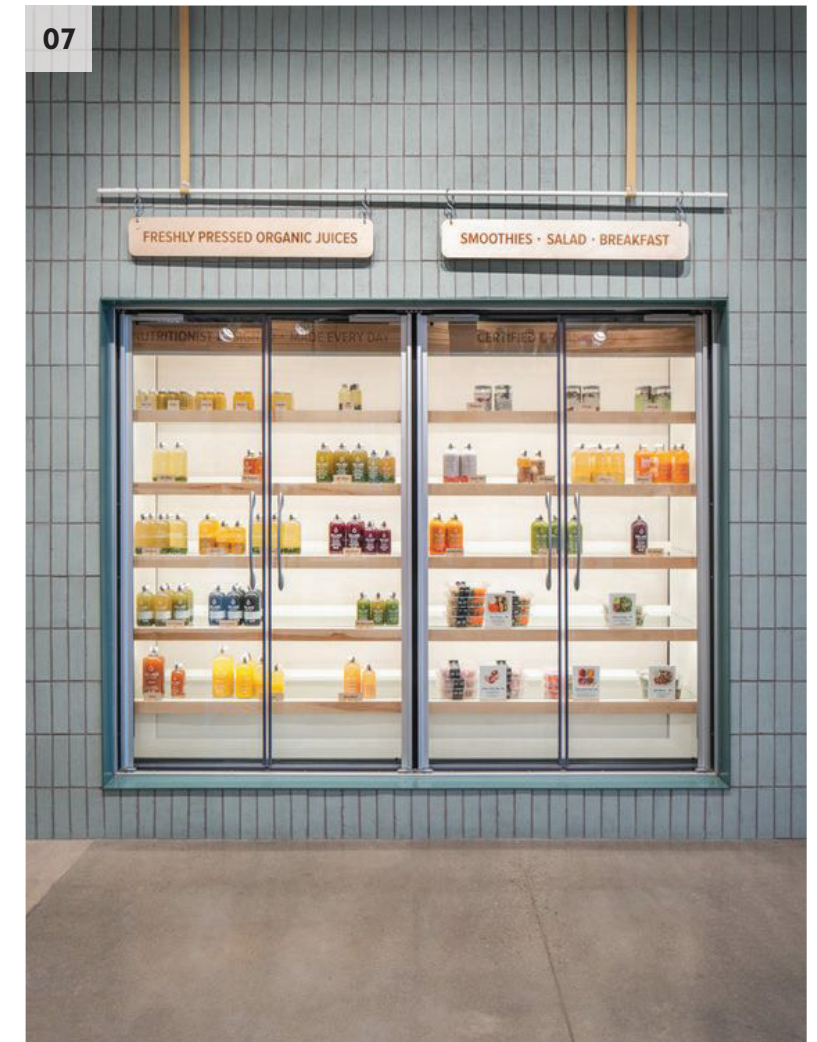
DINING COUNTER & STOOLS

06

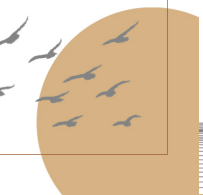
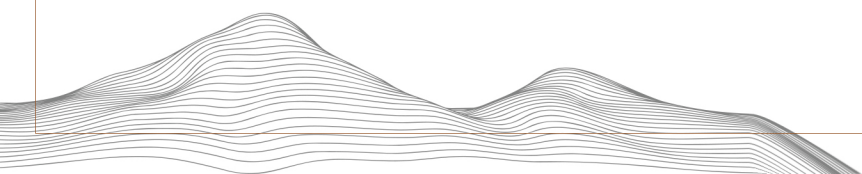


MOVABLE ISLAND W/ STORAGE

07

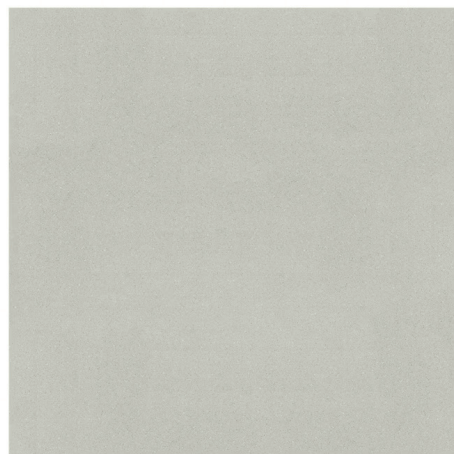
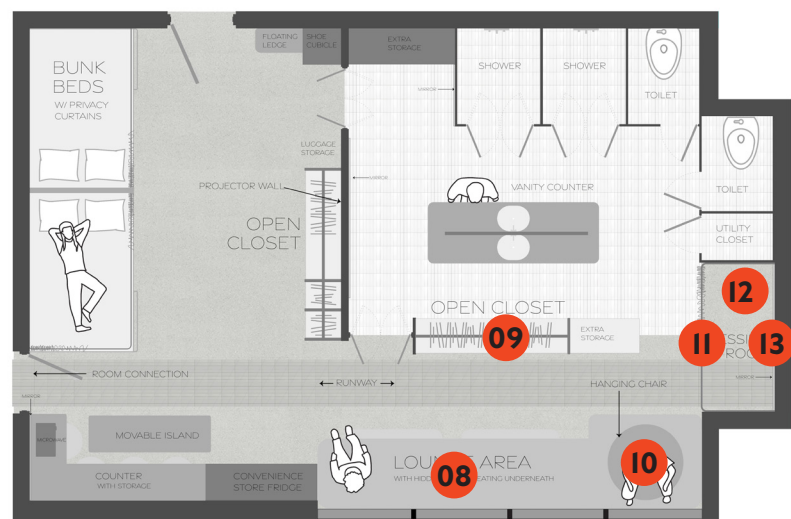


CONVENIENCE STORE FRIDGE

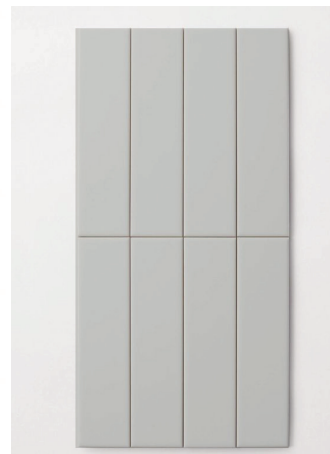




# FF&E Selections



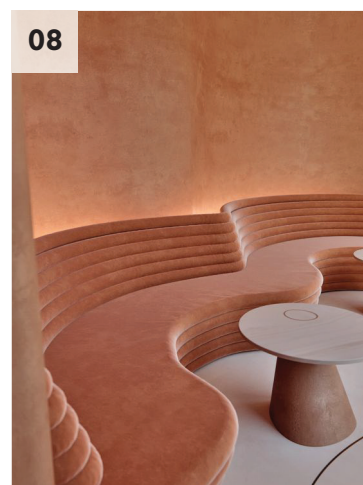
FLOOR - CEMENT TILES



RUNWAY  
SUBWAY TILES



LOUNGE AREA  
SIDE WALL TILES



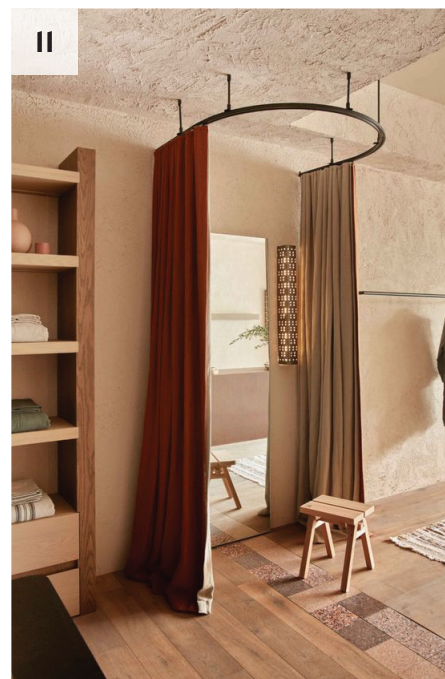
LOUNGE AREA - SAME STYLE AS LEFT, BUT WITH YELLOW UPHOLSTERY (RIGHT)



OPEN CLOSET



HANGING CHAIR



DRESSING ROOM CURTAIN



DRESSING ROOM CHAIR



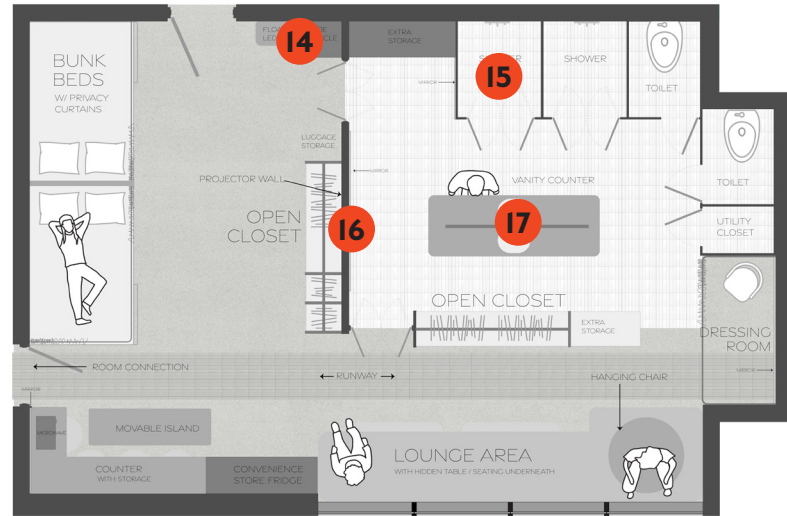
DRESSING ROOM MIRROR





DUNE

# FF&E Selections



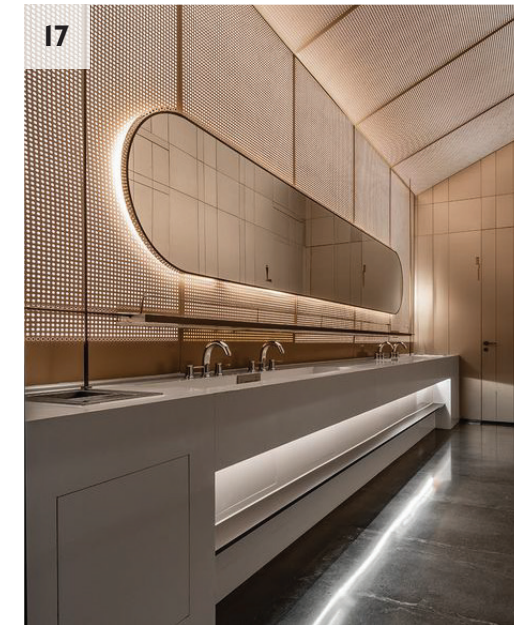
WALL - STUCCO



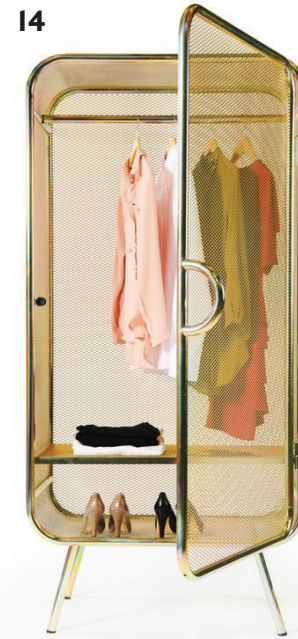
FLOOR SUBWAY TILES



WALL MIRROR



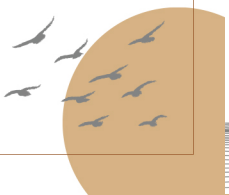
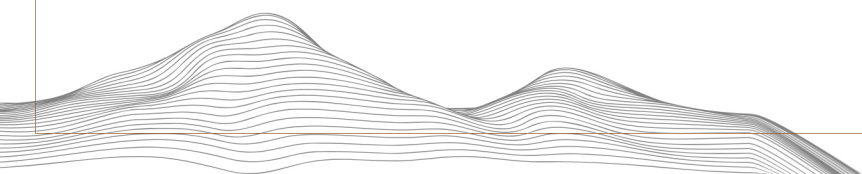
BACK-TO-BACK VANITY



EXTRA STORAGE (W/O THE DOOR)



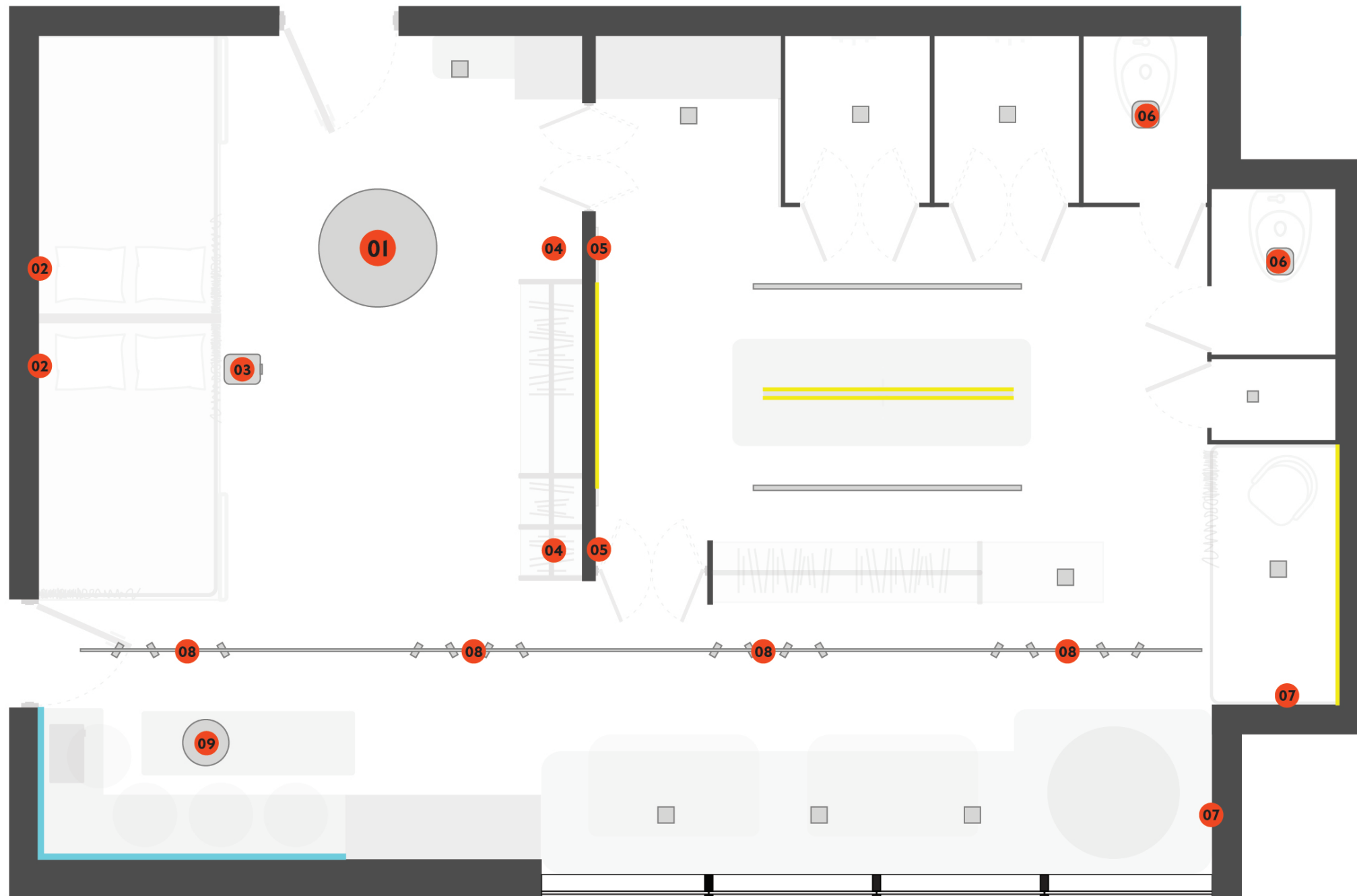
AMBER TILES/DOORS FOR BATHROOM & TOILET STALLS









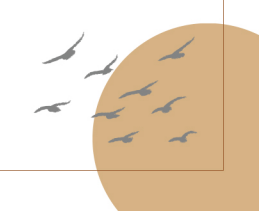
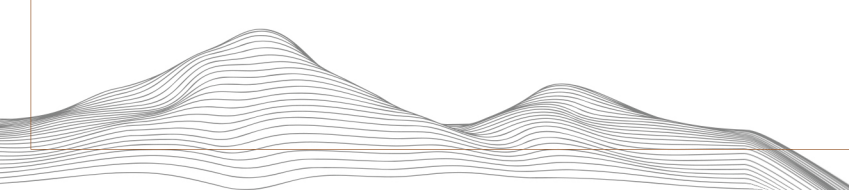
# Reflected Ceiling Plan

The numbers correspond to the decorative lights on the next page.



## Non-decorative lights legend:

-  RECESSED DOWN LIGHT
-  RECESSED STRIP LIGHT
-  MIRROR W/ BUILT-IN LIGHT
-  (WALL) STRIP UP LIGHT





DUNE



LARGE PENDANT LIGHT



FLOOR & TABLE LAMPS



RUNWAY TRACK/SPOT LIGHTS



PENDANT



RETRACTABLE WALL TASK LIGHT



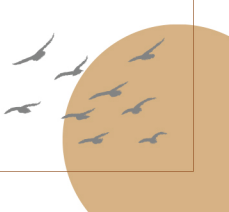
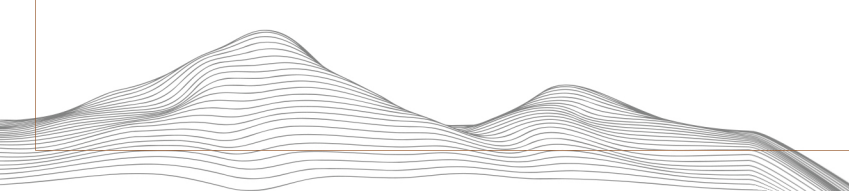
WALL SCONCES

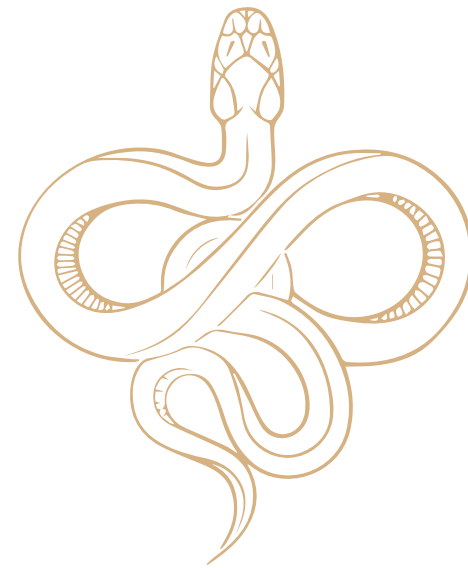


CEILING MOUNTED PROJECTOR



MINI CHANDELIER





# DUNE

DUNE HOTEL © 2023 JAE SANTOS

