



AUTOMATION MADE EASY

THE SINGLE OPERATOR WORKING CELL



SCAN FOR DEMO

WWW.CNCFACTORY.COM



GROW WITH US

Meet a small business who scaled up operations with CNC Factory.



ALL IT TAKES IS 1

Find out what Carter discovered on his quest for pandemic & turnover-proof CNC operations.



EASY PAY

Need financing to purchase from us? Find out how to apply.

LINKS WORTH CHECKING OUT

SCAN QR CODE ON YOUR PHONE
OR CLICK LINKS (FOR DIGITAL EDITIONS) TO WATCH THE VIDEOS:



Shorten the CNC learning curve

Made for shop owners who want to automate but are intimidated by technology, this course breaks down the fundamentals of operating a CNC-run cabinet shop, and what you need and don't need to learn when you have 5G CNC technology.

<http://bit.ly/shorten-curve>



Knowing what to ask

7 questions to ask CNC sales reps (and why!) when shopping for your CNC router or machine center. They will help protect your investment and ensure you get the latest CNC router technology.

<http://bit.ly/know-ask>



Take it from The Cabinet Shop

A testimonial video from a budding cabinet shop in Boise, Idaho on how they got so much done and "went home early and not feel tired".

<http://bit.ly/cabinet-shop>

CHRIS'S CORNER

A MESSAGE FROM THE CEO

It's finally here!

As a cabinet-builder of over 20 years, I have had daydreams after daydreams of what machines my ideal CNC-powered woodshop would have. The vision was always something uncomplicated, reasonably priced, battle-worthy, and ahead of its time. Today, we are so proud to offer the **Complete 5G CNC Working Cell**— a true feat of engineering that turns raw materials into flat pack products, all with just a single operator. It promises to do more with less (and it's pandemic-proof too! Read more on page 6).

We hope this edition will help you make an informed decision if CNC Factory is the right investment for your business. If you like what you see, just take the first step and contact us, and we'll take care of the rest. Please enjoy.

chris corrales



DeLuche Tool

Guaranteed for Life! x3 Tool Life!

Get a new replacement tool, anytime, for whatever reason, at a discounted price*

Customers say:

"Saved thousands + no more tool compensation for resharpened bits!"



GET AN EXTRA 10% OFF YOUR ENTIRE ORDER

Use code **SHOWSPECIAL** at **DELUCHE TOOL.COM**

714 - 581 - 5999

*SHIPPING FEES MAY APPLY

DO YOU HAVE 5G CNC?

LOOK FOR:

marking/ label printing

Manually identifying or applying pre-printed labels on cut parts is a time waste and prone to errors. 5G CNC automates parts marking so there's no double-checking and no stop signs.



Our on-board label printer prints text & image labels which are applied by a robotic arm.

helical rack & pinion

5G CNC does not use long ball screws with rubber belts that get loose over time, cause backlash, and need periodic retensioning. Look for 5G CNC with a rack and pinion rail system for the X & Y axes for consistent & absolute positioning.



NEVER LOSE CUT PARTS AGAIN

The **Deluche Vision Marking Tool** is a patent-pending technology (yes, only we have it!) that automatically marks post-production info on parts. Exclusively sold at CNC Factory via www.cncfactorystore.com.



Quick Install

Plugs directly into any tool holder and works with popular cabinet-cutting software.

Interchangeable & Refillable

Switch different pods (containing your instructions) as you need them. Ink is refillable.

Customizable

Pick your own pod text or choose from our library. With 4 ink choices.



Easy to Clean

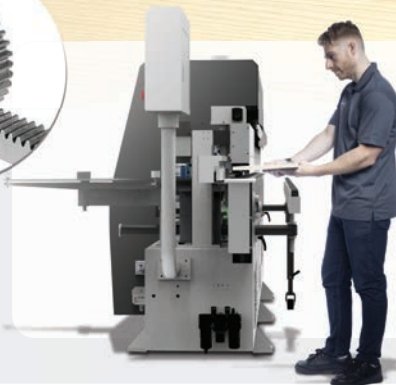
Wipe marks off with an alcohol swab or a light sanding (for wood surfaces).



"No mistakes— I always know which side to edgeband.

We also avoid damaging the parts since they're marked *at* the machine and there's no need to move them to a separate marking station "

-Jeremy, Deluche Customer





CNC Factory machines are also sold via:



WEST COAST

Würth Louis and Co.

www.wurthmachinery.com

800-442-4389

EAST COAST

Würth Wood Group

www.wurthwoodgroup.com

800-440-8497

MIDWEST - NORTHEAST

Würth Baer Supply

www.akinsmachinery.com

800-932-4825



MADE WITH CNC FACTORY

When Paul Lucas of Preferred Millworks and Design decided to grow his cabinet business by increasing his output and investing in CNC equipment, he found the ideal router for his new 7,600 square ft. shop when he consulted with Würth Louis and Company, which recommended **CNC Factory's Python XPR**.

Lucas says the two-year-old company in Edmond, Oklahoma, has seen phenomenal growth in 2020, even in the depressed economy. Lucas provides the millwork, trim and cabinetry to six builders in Central Oklahoma. "With the way we have been growing, we are on schedule to outfit 300 homes in 2021."

One of Lucas' strategies for growth is to construct his own HDF cabinet doors, as opposed to buying them from a door supply company. Implementing the latest CNC technology is key in manufacturing those doors and meeting aggressive timelines. "We knew we needed to automate to double our capacity by 2021," says Lucas.

"When considering the machine's availability, Paul's needs and expectations and Return on Investment, I had no problem in steering him to the 5th Generation CNC Factory Python," Kyle Ward from Würth says. "It was all a very smooth process".

Lucas chose the Python over other CNC manufacturers because: 1) the base price was reasonable at the mid \$70k range; 2) it was extremely robust and scalable; and 3) the machine could be delivered in three weeks.

"The timetable was huge because our work is just exploding!" Lucas says. "When we started, we had four guys in the shop and me in the field. Now, we have ten guys in the shop, three in the field and about 30 contractors!"

"The machine was here in three weeks and Mario Tellez, the CNC Factory technician, was here training my team," Lucas says. "This was in the midst of the largest ice storm I've ever seen in Oklahoma!" During training the power at the cabinet shop went out for about 30 seconds, but the Python never had to recalibrate. "It picked up right where we left off. That's a big advantage of having 5th Generation CNC Technology—it never needs homing!"

For two days Tellez trained the Preferred Millworks Design employees in operating the machine and its software packages. "The shop has one designated CNC operator but Paul wanted at least two employees to be trained on it," Tellez says. "They were both running it the first day of training."

"With a large 21-inch touch screen, intelligent vacuum hold down system, and 12-tool carousel, the Python is super easy to learn," Tellez says. "Paul's 12-year-old son, Jackson, was creating wooden boards with the image of Yoda in the included VCarve Pro software the very first day."

"Our CNC operator loves the new Python," Lucas says. "It's the easiest CNC he's ever operated with a whole lot more capabilities".

Visit: www.preferredmillworksok.com

DO YOU HAVE 5G CNC?

LOOK FOR:

21" touch screen controller

5G CNC has a dedicated controller with a huge screen so you can design at the machine. Plus, it can be accessed by customer support remotely.

Safety lights that alert of any error.

HD camera for remote access & diagnostics.



MPG wireless remote for manual control.

Mobile with a tiny footprint (about 2.7 ft²).



AWFS FAIR PREVIEW

ALL IT TAKES IS 1 OPERATOR

When non-tech savvy cabinet-maker Carter, lost his experienced CNC operator from his small cabinet shop to COVID-19, he knew he needed a change. "I did not want to spend any more time learning G-code to use my old CNC router, or retraining someone to do it." It was also upsetting for him to realize how losing 1 of only 3 production employees paralyzed his entire operation. "I need something pandemic and turnover-proof. And when I saw FDMC Magazine pick **CNC Factory as 2020's Best CNC machine**, I had to check them out", Carter says. He then discovered CNC Factory offered more than just the best CNC Router.

Designed & Engineered in California

In CNC Factory's facility in Southern California, Carter saw first-hand how the machines were built and assembled. Chris Corrales, CEO of CNC Factory welcomed him to their showroom and even showed him the older generation machines they used to build. "The 5G working cell is the latest evolution", Corrales explained. "Today's models are the result of upgrades after upgrades from years of customer feedback and experimentation with new technologies".



- CNC Factory's 5th Generation CNC Working Cell turns raw materials into products ready for flat packing with no critical thinking and no heavy lifting.
- It's made up of a 5G CNC Router, edgebander, dowel insertion machine, plus conveyors and a robotic arm.
- It can be operated with just 1 unskilled operator.

Corrales' mission is to make CNC automation as commonplace as a table saw, and he believed that the key to adoption is to simply make everything easy for its users. As a cabinetmaker himself for 20 years and now a CEO, he understands exactly what shop owners are looking for, and has locally designed a set of autonomous yet collaborating machines that fulfill the needs of any woodworker. CNC Factory's "Complete CNC Working Cell" is made up of a CNC Router, Edgebander, CNC Insertion machine, robotic arm, and conveyors.

CNC Factory machines are not only engineered for easy operation and communication with each other, they also allow remote diagnostics & tech support, easy maintenance, and painless training. "They even have learning stations for their CNC University in California where I could send my operators to get trained for free", Carter says.

Driverless Operations

Carter thought the process was pretty straightforward—he could design his cabinets beside the Python XPR CNC Router on its 21-inch touchscreen using the pre-installed VCarve Pro or KCD CNC Commander software. There was no need to transfer files from another PC or laptop, or mess with the G-code. He would then need to place his material into the Python's loading bed (which can hold about 40 sheets). "Then the magic happens", Carter says as he presses a few buttons and watches the Python go in autopilot mode. It loads his material, aligns them, then proceeds with labeling and cutting. After, the Python unloads the labeled cut parts while cleaning the spoilboard; the parts stop just at the edge of the unloading table for the robotic arm to pick up. While all this is happening, the Python is already loading up another material.

DO YOU HAVE 5G CNC?

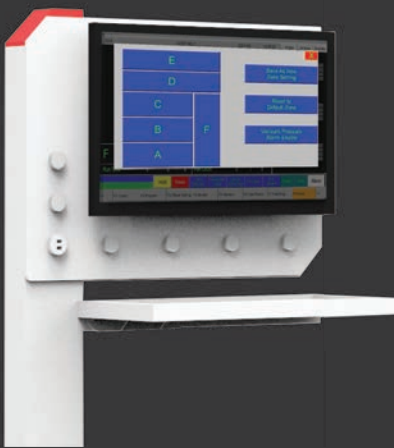
LOOK FOR:

automatic vacuum controls

5G CNC does not use outdated manual vacuum levers to adjust work holding. Everything is controlled via touch screen. You never need to remember which valves to use or if they are on before cutting.



Old news: Turning on/off valves manually takes strength under high pressure.



With 5G CNC, you select vacuum zones to activate by pressing a few buttons.

Cont... All it takes is 1 operator

Cut. Edgeband. Insert Dowel. Repeat.

The robotic arm, which can carry weights up to 50 pounds, then transfers the routed parts into the Badger edgebander. No one needs to be at the receiving end as the Badger is equipped with a return conveyor that brings back material back to the operator. Carter is delighted to see the seamless edgebanding, but is also pleasantly surprised to see the post-production marks as labeled by the Python. "There can be no mistake on which sides I need to edgeband next", he says as he feeds the Badger a different side of the same material. After completely edgebanding his part, Carter glances nervously at the Python to check if everything is still doing fine. He notices that the Python lights are only showing flashes of green and white, which means nothing needs his attention. Otherwise, error alerts and red lights will start flashing.

From the Badger, he then proceeds to the Scorpion LDR CNC boring & dowel insertion machine. He takes a barcode scanner and scans the same label on the edge banded part. This automatically feeds the Scorpion the part's dimensions and boring & insertion locations. Carter then places the part on the station, in the direction indicated by the Scorpion's graphical interface and presses the start button. The Scorpion's patent-pending, laser-guided robotic measuring system precisely drills two holes at a time, and then insert dowels. Seconds after, he picks up a ready-to-assemble part and places it on his finished pile. "I can't believe I did all these by myself", Carter says.

Can this get any better?

"Even at its fully-loaded form, you can still grow your machines as your business grows", Corrales says. "Back in my day as a cabinetmaker, it was you buy what you get and you get what you buy...then two years later, you would find that you need some new capability and you would have to take a big loss on your machine to buy another one. We've really turned a lot of the industry upside down having this plug and play capability that our customers are starting to see and exercise." The Python XPR can drill and mark faster by adding a 9-position drill block and a 4-port marking block. Work holding can also be increased with a second vacuum pump. A mister kit is also available if you need to cut plastics, acrylics and aluminum. For the Scorpion LDR you can add up to 5 insertion guns, as



Changing Shifts?

The Python's Working List queues and executes one job after another. Its progress is easily tracked on the touch screen so there's no confusion when transitioning between work shifts, or even when the operator comes back to work from a break.

well as ask CNC Factory if you need a custom conveyor for your workspace. “And the best part is your machines are already pre-wired for these upgrades, so adding them in the future will just be plug & play. No expensive retrofitting or retraining costs. They all work with the same program”, Corrales adds.

CNC Factory also provides in-house and 3rd party financing to cover 50% to 100% of equipment costs with a quick 1-day approval. Corrales says when you compare side-by-side all the 5th generation features of the CNC Working cell, at its price point, against their competitors, the decision on which investment to pick becomes clearer.

“Think of it this way” Corrales explains, “If you invest a ton of money to automate but still find yourself needing experienced machinists who need to do a lot of mental calculations and back-breaking work —those little chores of having to home your machine daily or run back and forth to the machine to manually crank vacuum valves, having to double-check which parts go where or having to train new operators with G-code—ask yourself: what’s the point of automating? Shouldn’t automation just make your life easy?”

Carter agrees. ■



From Raw to Ready-To-Assemble

Work that normally takes 2 to 3 staff to complete is now done by a single operator that does not need any G-code knowledge or a lot of physical strength.

WORKFLOW

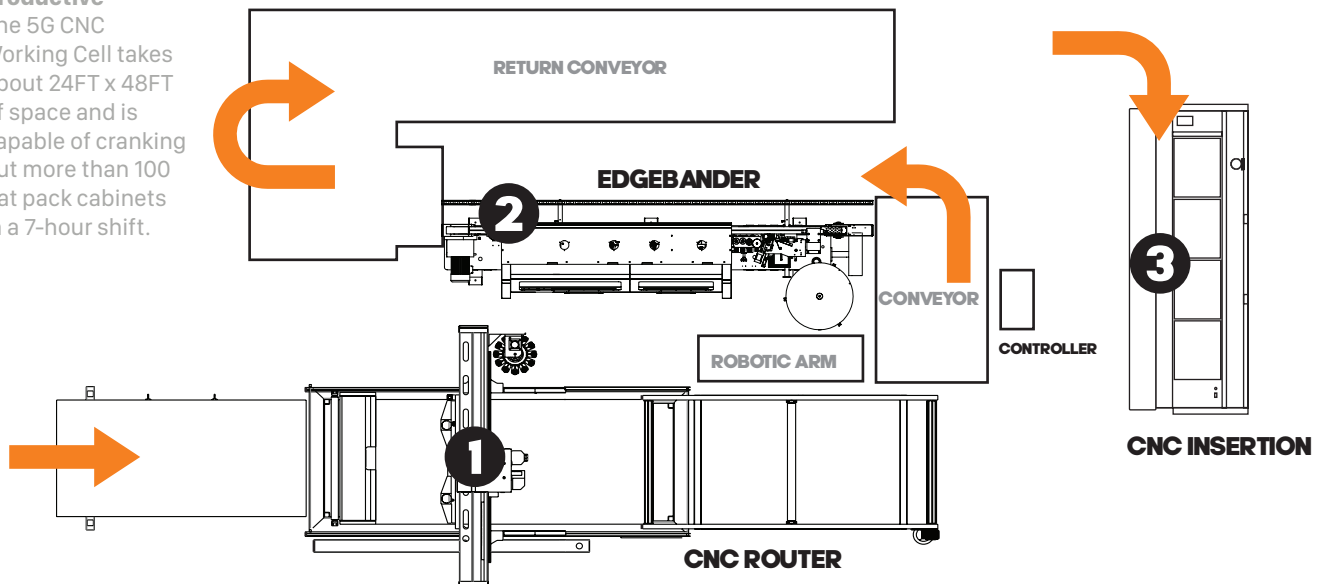
GET THE COMPLETE WORKING CELL STARTS AT \$249,000

Pay only \$3,595 per month with zero down payment

with Harbor Capital financing* An investment of just **\$22.47/hr****

Compact, yet Powerfully Productive

The 5G CNC Working Cell takes about 24FT x 48FT of space and is capable of cranking out more than 100 flat pack cabinets in a 7-hour shift.



*For A-credit customers over an 84-month term. Rates subject to change
 **Financed computation based on 40-hr work weeks per month.

DO YOU HAVE 5G CNC?

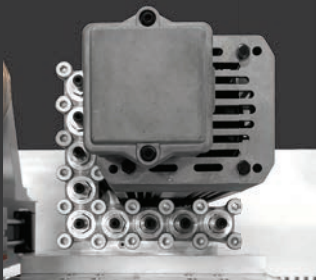
LOOK FOR:

expandability

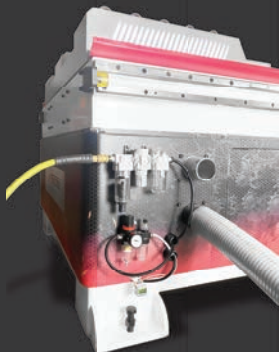
5G CNC machines can grow as your business grows with upgrades that you can add any time. They are pre-wired for expansion so there's no extra cost to upgrading; everything is plug & play.



No heavy lifting with Loading & Unloading tables.



Faster production with drill & marking blocks.



Extra ports for a 2nd vacuum pump.

VIPER XP



CNC ROUTERS

If you're undecided on which CNC router to buy, ask yourself these— will it still require heavy lifting and repetitive manual effort such as turning on vacuum valves? Is it hard to learn and needs an experienced operator? Are there tasks that I would need to keep on remembering such as daily homing? If you said 'Yes' to any of those, then your router does not have the latest CNC technology. You need CNC Factory's latest 5G CNC which removes the thinking and back-breaking work from your routine. **After all, isn't that the whole point of automating?**

NO THINKING

There's NO need for daily calibration, mathematical calculations, learning G-code, tool measuring, keeping tabs on workholding, or identifying cut parts. Its graphical interface is easy to learn so everyone in your shop can be easily trained to use them.

DRIVERLESS

When fully upgraded, our machine centers can work in autopilot mode and queue hundreds of jobs, one after the other. Your work progress is easily monitored so there's continuous production even if your operators change work shifts. Manager access and troubleshooting can also be done remotely.

MADE FROM THE BEST TECHNOLOGIES

Just like an iPhone, our routers are made up of the best technologies from around the world: Italian spindles, German rail systems, Taiwanese controllers, and Japanese servo motors among others. Designed & engineered in California, all parts are 100% stocked in the USA to ensure that you'll get them when you need them.



COMPARE APPLES TO APPLES

Don't get misled by marketing buzzwords. Use this chart to get an objective comparison with other brands.

	VIPER	SIDEWINDER	PYTHON	OTHER BRANDS <i>Fill in the blanks</i>
STARTING PRICE	\$ 35,900	\$ 44,900	\$76,800	\$
SPINDLE & SPEED	10HP ATC spindle 800 IPM cutting speed 1800 IPM travel speed	12HP ATC spindle 900 IPM cutting 1800 IPM travel	12HP ATC spindle 1000 IPM cutting 2500 IPM travel	
HOMING	No homing or daily calibration needed			
ATC TOOL CHANGER	<ul style="list-style-type: none"> • 8 Tools on the gantry • Upgradable to 12 	<ul style="list-style-type: none"> • 8 Tools on rotary carousel • Upgradable to 12 	12 Tools on rotary carousel	
	Allows loading of material on all 4 sides			
CONTROLLER	<ul style="list-style-type: none"> • 21" Touchscreen • Tiny footprint at 26"W x 15"L x 64"H (Approx 2.7 sq.ft) • Mobile base. With safety lights & wireless handheld controller • Digital HD camera for remote access & troubleshooting • Ethernet, WiFi, USB Connectivity 			
VACUUM SYSTEM	High-flow vacuum table	Dual layer, high-flow vacuum table		
	<ul style="list-style-type: none"> • 6- 8 vacuum zones • Automatic vacuum valve controls on touch screen (no manual valves!) • With 2 vacuum ports (for a 2nd vacuum pump) 			
SOFTWARE	<ul style="list-style-type: none"> • With built-in cabinet library. Compatible with popular CAD/CAM software. • Large screen and PC-front end allows designing at the machine 			
RAIL SYSTEM	Helical rack & pinion for X& Y axis (no ball screws & rubber belts!)			
ANYTIME UPGRADES	<ul style="list-style-type: none"> • 12HP spindle • 9-position drill block • 4-port marking block • V300 vacuum pump • Vision Marking Tool • Mister Kit • 12-tool ATC 	All upgrades of the Viper <i>plus</i> : <ul style="list-style-type: none"> • Hydraulic loading table • Robotic loading arm & material alignment • Unloading conveyor with material sensing • Robotic dust hood 	Automatic loading & unloading tables + material alignment + robotic dust hood are already included Other upgrades include: <ul style="list-style-type: none"> • Robotic label printing & application 	

BADGER 4600

WITH CORNER ROUNDING STATION

\$ 28,900



BADGER 5600

WITH CORNER ROUNDING & PUR ZERO GLUE LINE STATIONS

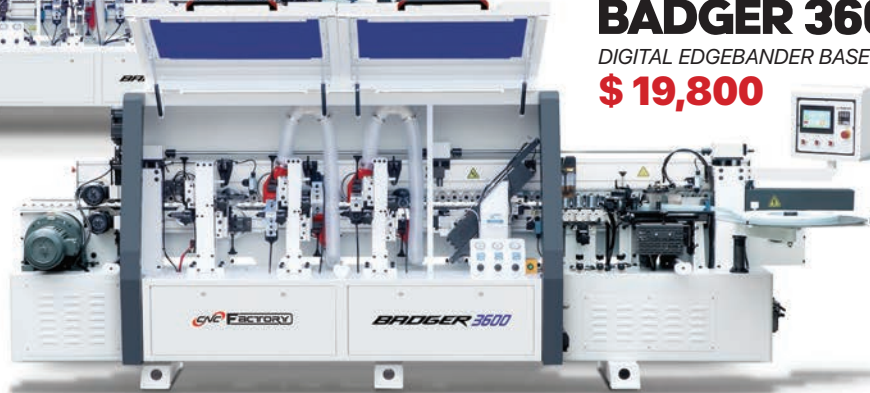
\$ 48,900



BADGER 3600

DIGITAL EDGEBANDER BASE MODEL

\$ 19,800



EDGE BANDERS

The Badger is a 5th Generation automatic digital edgebander. It's designed for profitability, speed, and ease of use for the woodworker, and has the smallest footprint for an edgebander with its features.

It's plug & play-ready for our return conveyor that returns edge banded materials as long as 100" (8 feet) back to your operator, for non-stop edgebanding.

5G Features:

- Front & end trimming
- Top & bottom cutting
- Top & bottom rough scraping
- Top & bottom fine scraping
- Liquid cleaning & buffing
- Built-in heater for pre-heating for optimum glue penetration
- 2-liter pellet glue pot— customizable to match glue manufacturer settings
- Automatic pressurized lubrication
- Extendable guide rollers



Built-in Material Stop

Automatically closes and opens so you don't have to guess the correct placement timing for your next piece of material.



Independent Motor Controls

Independent high frequency motors for each operation to give you the unique freedom to choose your desired level of automation and makes it easier to service.



PLC Touch Screen Interface

User-friendly, no thinking controls at your fingertips. With workload history access.



Flexible With Materials

Works with veneer, tapes, PVC or solid wood up to 3mm thickness.

SCORPION X

CNC BORING & DOWEL INSERTION
1-2 WORKSTATIONS

\$ 29,800

SCORPION LDR

CNC BORING & DOWEL INSERTION
1-4 WORKSTATIONS

\$ 76,800

SCORPION SIDEKICK

DRAWER FRONT &
FACE FRAME NOTCHING

\$ 16,900



CNC FASTENER INSERTION

With 10X Stronger H-Clip Insertion, the Scorpion X & LDR are boring and hidden fastener/dowel insertion powerhouses that reduce your assembly time by 70%. With 1-4 independent workstations and a graphical touchscreen interface, it only needs a single, unskilled operator. Flat pack production ready. Made in the USA.

5G CNC Features:

- CNC Edge Boring
- Automatic Plastic Barbed Channel Lock, E-Clip & H-Clip; and Spring Pin Insertion; Automatic Wood Dowel insertion
- On-board air-cooled spindle with auto sensing & positioning
- Drill Library including 5mm, 8mm and 8.2mm
- High capacity adjustable material hold down
- Works with standard or mini clips with no tool changing
- 5th generation helical rack and pinion
- Password protection with virtual remote access



Patented High-Speed Dual Drilling

Drills 2 holes at a time to reduce processing by more than 50%. No manual changing of bits as it automatically selects from the drill library.



Robotic Lean Manufacturing

It can be manned by a single, unskilled operator and allows rapid assembly & flat packing.



Automatic Jam Cleaning

In rare cases of clip jamming, it self-cleans, reloads, and resumes operation on the same position.



Multiple Operation Modes

Offers Parametric, G-code, and Multi-Edge modes. Easily integrates with popular CNC software.



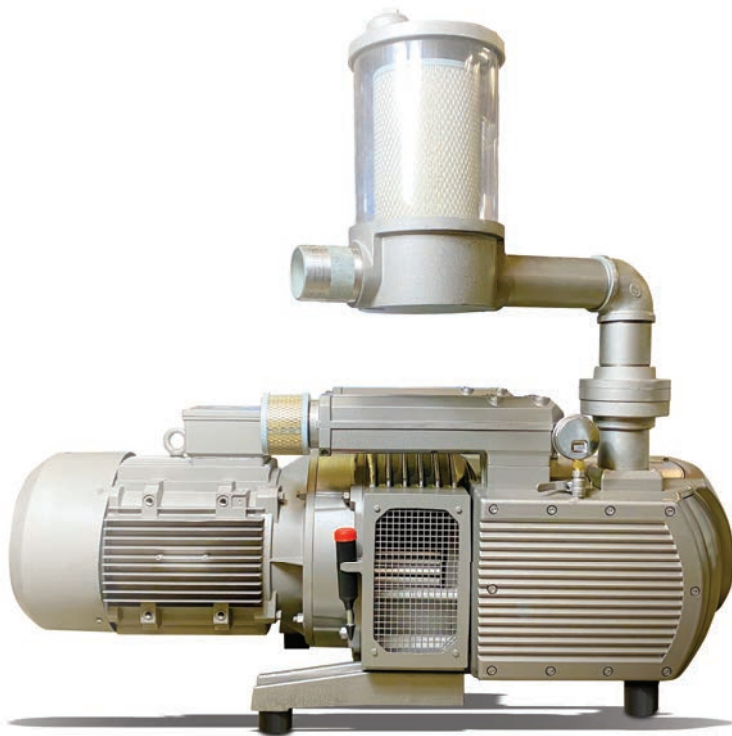
The Cyclone 4896 can press virtually any 3D shape using PVC sheets, rigid sheets, PS sheets, acrylic, ABS and wood veneers. Easy to use, a single operator can produce over 300 pieces per 8-hour shift. Get short-cycle, high-yield pressing with new generation technology.

\$ 26,900

Features:

- Automated heating, vacuum forming, and cooling process
- Small footprint design
- Integrated heat sensors for accurate and even heating
- Automated vertical shell opening and closing for easy production & space saving
- Full process area access
- Easy-to-operate, one-button digital PLC monitor

THERMOFOIL PRESS



Driverless vacuum technology makes the need for a seasoned operator a thing of the past with constant vacuum hold-down communication from the Smart V300 Vacuum Pump.

\$ 6,900

5G Features:

- Electric phase protection
- Thermal protection
- Energy-saving 5.5kw rotary vane technology
- Wireless on/off
- Automatic vacuum flow on and off, during material cycling and unloading
- Quiet at under 80 decibels
- Easy maintenance

V300 VACUUM PUMP

FINANCING

We make buying easy with 2 financing options so you don't have to spend all your hard-earned money in one go. You can start by submitting an application form. Download it at cncfactory.com/easy-pay or scan here:



	CNC FACTORY'S EASY PAY	HARBOR CAPITAL FINANCING
PRE-REQUISITES	In business for at least 1 year	None
CREDIT CHECK	None	Yes
DOWN PAYMENT	50%	None
PERCENT FINANCED	Up to 50% Max of \$200,000	Up to 100% including soft costs Max of \$ 250,000
INTEREST RATE	9%	Fixed rates. Contact for latest APR.
TERMS	Up to 36 months	Up to 84 months
EARLY PAYOFF	With discount	No penalty
APPROVAL	1 day	1 day

WHY CNC FACTORY?

1 WE'VE GOT YOUR BACK

Most of our machines have **lifetime technical support**. We also offer virtual and optional on-site support from our East & West Coast tech locations. Our online Knowledge Database also has helpful troubleshooting resources.

2 THE LONGEST WARRANTY

Get the longest CNC warranty of 18 months on major and non-consumable parts.

3 ADVANCED EXCHANGE PROGRAM

We'll send your replacement parts via overnight shipping *in advance* so you'll have non-stop production. Just return the old parts back to us within 2 weeks.

Read case studies of these satisfied customers at cncfactory.com/clients:



cober[®]

Home of American-quality kitchen cabinetry
www.cobercabinets.com



School Specialty

Creating products that help educators engage & inspire students to learn.
www.schoolspecialty.com

“ABSOLUTELY GROUNDBREAKING”

THE PYTHON XPR DRIVERLESS CNC



LOAD

and align material automatically. No heavy lifting!

MARK

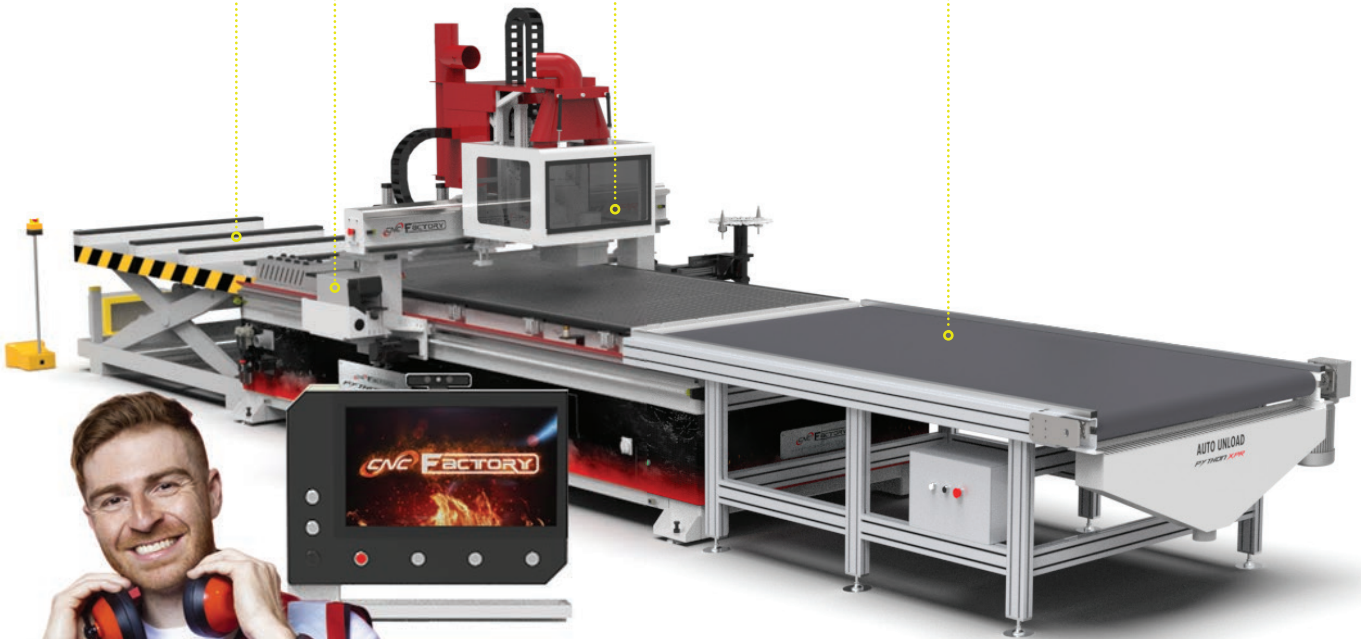
cut parts accurately at the machine

CUT

Consistent, quality cuts— fast!

UNLOAD

and clean your spoilboard automatically. All you need to do is pick your part up!



JUST PRESS A FEW BUTTONS

- NO critical thinking
- NO back-breaking lifting
- NO G-code knowledge needed

BUILD YOUR OWN PYTHON

AT [CNCFACTORY.COM/MACHINES/PYTHON-XPR](https://cncfactory.com/machines/python-xpr)

18-month warranty. Lifetime technical support. Financing available.

+1 (714) 581 - 5999 • sales@cncfactory.com

